

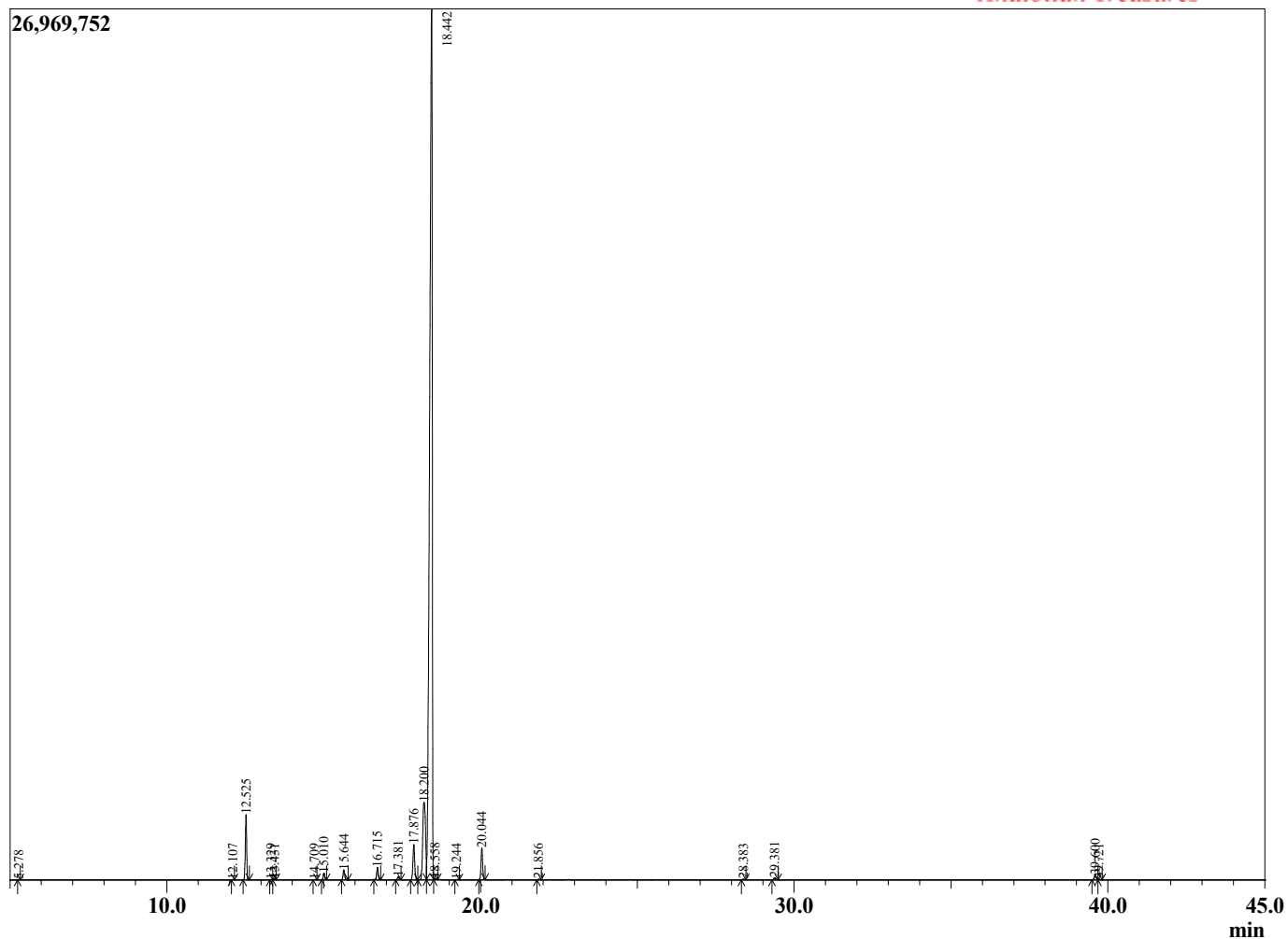
Sample Information

Sample Type : Essential Oil  
 Sample Name : Eucalyptus globulus  
 Injection : 0.10  
 Volume :

Eucalyptus Blue Gum  
 Lot# AUC30-CK  
 Country: Australia



Chromatogram Eucalyptus globulus



R.Time	Name	Area%
5.278	Unidentified	0.01
12.107	alpha-Thujene	0.01
12.525	alpha-Pinene	3.32
13.329	alpha-Fenchene	0.01
13.431	Camphene	0.03
14.709	Unidentified	0.01
15.010	beta-Pinene	0.37
15.644	Myrcene	0.56
16.715	alpha-Phellandrene	0.71
17.381	alpha-Terpinene	0.18
17.876	para-Cymene	2.35
18.200	Limonene	8.07
18.442	1,8-cineole	81.79
18.558	cis-beta-Ocimene	0.07
19.244	trans-beta-Ocimene	0.02
20.044	gamma-Terpinene	1.89
21.856	Terpinolene	0.03
28.383	Terpinen-4-ol	0.03
29.381	alpha-Terpineol	0.15
39.600	alpha-Terpinyl acetate	0.34
39.721	gamma-Terpinyl acetate	0.04
		100.00